



PROJECT		REF		REV	ITEM CODE	
LOCATION		DATE			PAGE	

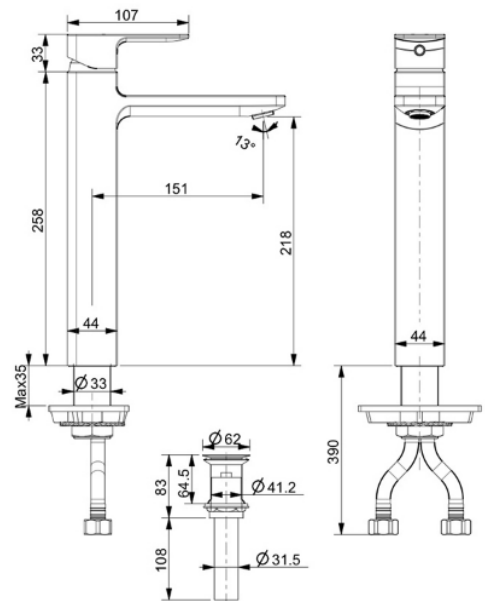
SANITARY WARE SPECIFICATION SHEET

Item Descriptions	American Standard (PRC) "Acacia Evolution" Matte black extended basin mixer with ECO handle and click technology to save water and energy
Dimensions	L151 x W44 x H291 mm
Model	FFAS1302-101440BC0
Finish	Matt Black
Material	Brass
Manufacturer	American Standard (PRC)
Source	Acme Sanitary Ware Co. Ltd Mr. Eric Wong/ Mr. Don Yuen
Contact Tel/Fax	(852) 2388-7171 / (852) 2710-8012
E-mail	acme@acmesanitary.com.hk
Website	www.acmesanitary.com.hk

Illustration/ Drawing



- Features**
- Modern design that can fit with any style of bathroom
 - Eco-handle for saving energy (electric power)
 - Click technology offers 2 different water flow rates 0~50% and 50~100% for easy volume control and water saving
 - Ceramic disc valve for a life time use
 - Strong brass construction
 - Nickel and chromium plating for durable finish
 - Adjustable water stream direction aerator
 - With pop up drain
 - Flow Rate @ 0.1 MPa: 5.4 L/Min



ECO HANDLE FAUCETS

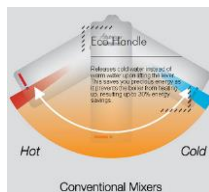
PROVIDES UP TO 30% ENERGY SAVINGS

Unlike conventional mixers, Acacia Evolution's Eco Handle releases cold water instead of warm water upon lifting the lever. This saves you precious energy as it prevents the boiler from heating up, resulting up to 30% energy savings. To get hot water, you only need to move the lever to the left.

CLICK TECHNOLOGY

PREVENTS WATER WASTAGE

By providing a resistance midway when lifting the lever, this technology gives you better water volume control, saving you precious water.



Note:

* All information of the above is for the reference only. No prior notice is made if any changes.